

# UNIVERSITY ADMISSION

## CHAPTER 2

---

The UGC selects students for admission to undergraduate courses of the Universities and Higher Educational Institutes (HEIs) established under the Universities Act.

This Chapter represents the summary of undergraduate students selected to said Universities & HEIs for the Academic Year 2014/2015 based on the results of the GCE (A/L) Examination held in 2014, admitted in 2015.

Accordingly, undergraduate admission presented in this Chapter refers to the count of students admitted to said Universities & HEIs by UGC for Academic Year of 2014/2015.

Table 02 - 01

**NUMBER OF CANDIDATES QUALIFYING AND ADMITTED TO UNDERGRADUATE COURSES OF THE HIGHER EDUCATIONAL INSTITUTIONS : Academic Years 2011/2012 - 2014/2015**  
(Universities and HEIs established under the Universities Act)

Year of GCE (A/L)		2011			2012			2013			2014		
Year of Admission		2011/2012			2012/2013			2013/2014			2014/2015		
Subject Stream		No. Qualified <sup>(1)</sup>	No. Admitted <sup>(2)</sup>	Percentage	No. Qualified <sup>(1)</sup>	No. Admitted	Percentage	No. Qualified <sup>(1)</sup>	No. Admitted	Percentage	No. Qualified <sup>(1)</sup>	No. Admitted <sup>(3)</sup>	Percentage
Arts	Total	75838	10297	13.58	69103	7995	11.57	68295	8227	12.05	68565	8617	12.57
	Female	56020	8222	14.68	51695	6456	12.49	51352	6638	12.93	51487	7040	13.67
Commerce	Total	30913	5742	18.57	40532	4966	12.25	37744	5225	13.84	40602	5299	13.05
	Female	17714	3324	18.76	22353	2903	12.99	21412	3140	14.66	23097	3256	14.10
Physical Science	Total	13340	5581	41.84	13229	5043	38.12	15514	5280	34.03	15634	5287	33.82
	Female	4099	1575	38.42	4237	1376	32.48	5127	1477	28.81	5273	1429	27.10
Biological Science	Total	20889	7244	34.68	21229	6129	28.87	21203	6376	30.07	23419	6316	26.97
	Female	14312	4821	33.69	14929	4618	30.93	14991	4383	29.24	16219	4138	25.51
Other <sup>(4)</sup>	Total	431	44	10.21	723	65	8.99	984	92	9.35	1352	124	9.17
	Female	325	32	9.85	531	40	7.53	675	56	8.30	917	73	7.96
Total	Total	141411	28908	20.44	144816	24198	16.71	143740	25200	17.53	149572	25643	17.14
	Female	92470	17974	19.44	93745	15393	16.42	93557	15694	16.77	96993	15936	16.43

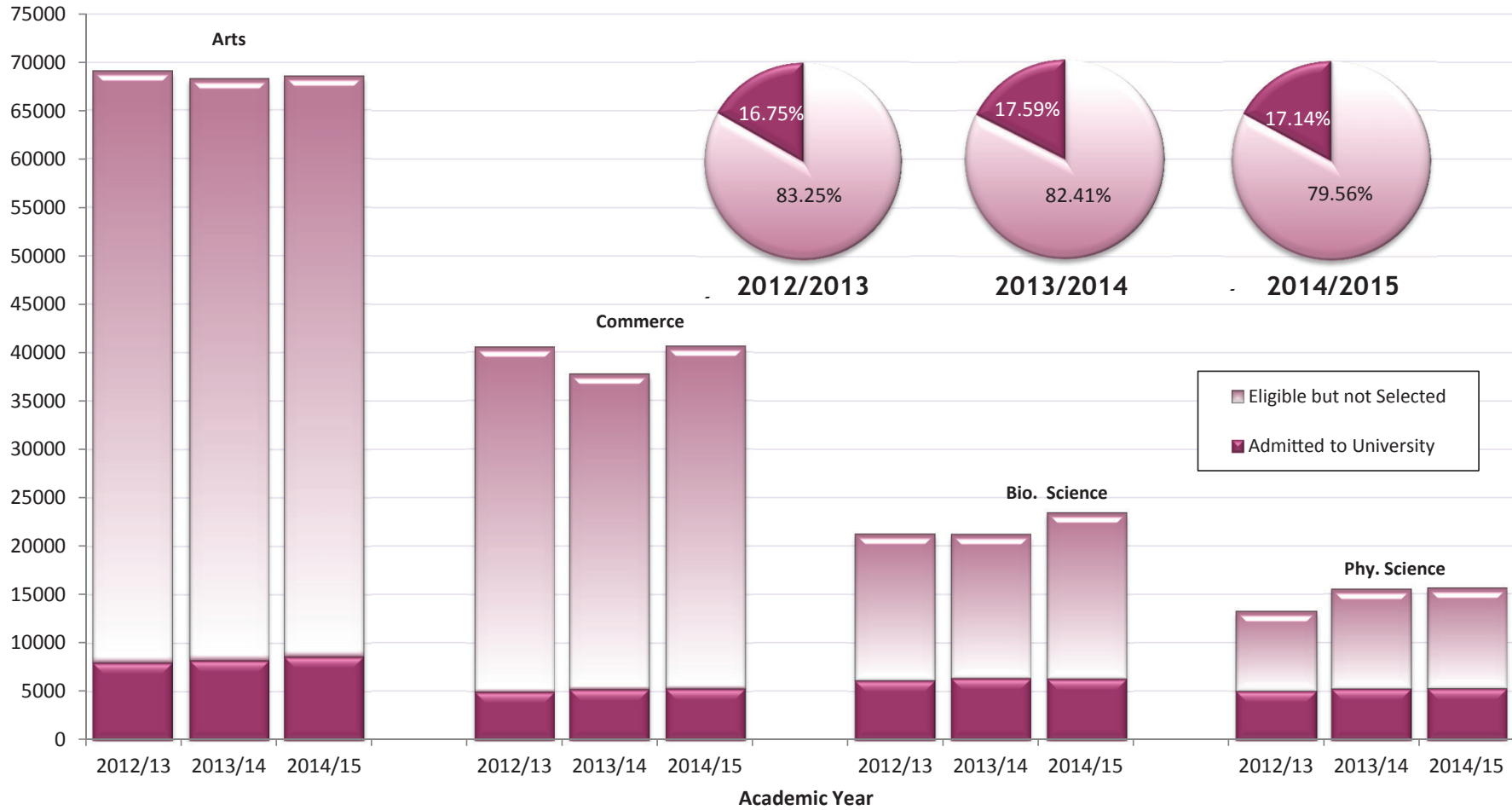
**Note :**

- (1) All the candidates who attained the minimum requirements for admission to the universities at the GCE (A/L) Examination.
- (2) This shows the intake based on GCE (A/L) 2011 which relevant to the year 2012 but admitted in 2013. The number admitted was increased due to a settlement of a litigation matter with regard to the methodology used to calculate the Z- score.
- (3) Excludes 33 students who admitted under foreign Intake and teachers Intake.
- (4) "Other" refers to the odd subject combinations introduced from GCE (A/L) 2011.

Chart - 01

### COMPOSITION OF STUDENT NUMBER ELIGIBLE TO ENTER AND ADMITTED TO HIGHER EDUCATIONAL INSTITUTIONS : Academic Year 2012/13 - 2014/15

(Universities and HEIs established under the Universities Act.)



Note : Excluding the students admitted under "Other" category.

Table 02 - 02

**UNDERGRADUATE ADMISSIONS BY ACADEMIC PROGRAMME AND SEX : Academic Year 2014/2015**  
(Universities and HEIs established under the Universities Act)

University/HEI	Faculty /Academic Programme	Sex	Colombo <sup>(4)</sup>	Peradeniya	Sri Jayewardenepura	Kelaniya	Moratuwa	Jaffna <sup>(4)</sup>	Ruhuna	Eastern <sup>(4)</sup>	South Eastern	Rajarata	Sabaragamuwa	Wayamba	Uva Wellassa	Visual and Performing Arts	Institute of Indigenous Medicine	Gampaha Wickramarachchi Ayurveda Institute	Swami Vipulananda Institute	University of Colombo School of Computing	Total
Arts	Female		730	729	717	1228		545	405	320	606	359	269			427			183		6518
	Total		858	906	894	1487		670	504	393	713	416	326			575			224		7966
Law	Female		216	43				45													304
	Total		250	49				51													
Management	Female		262	101	640	208		289	192	98	86	214	220	319	83						2712
	Total		420	150	1045	350		447	319	169	130	370	361	495	128						
Commerce	Female				72	128		70		61	67										398
	Total				126	202		103		105	110										
Medicine	Female		108	107	99	103		76	103	32		115									743
	Total		195	205	147	158		139	161	65		185									
Dental Surgery	Female			47																	47
	Total			80																	
Veterinary Medicine	Female			56																	56
	Total			99																	
Agriculture	Female			190				69	173	87		102	87	159	158						1025
	Total			298				102	248	113		157	135	210	234						
Science	Female		194	205	463	223		221	193	154	133	139	105	144	95						2269
	Total		516	483	879	479		522	400	330	292	243	269	307	174						

Table 02 - 02

**UNDERGRADUATE ADMISSIONS BY ACADEMIC PROGRAMME AND SEX : Academic Year 2014/2015**  
(Universities and HEIs established under the Universities Act)

University/HEI	Faculty /Academic Programme	Sex	University/HEI																	Total	
			Colombo <sup>(4)</sup>	Peradeniya	Sri Jayewardenepura	Kelaniya	Moratuwa	Jaffna <sup>(4)</sup>	Ruhuna	Eastern <sup>(4)</sup>	South Eastern	Rajarata	Sabaragamuwa	Wayamba	Uva Wellassa	Visual and Performing Arts	Institute of Indigenous Medicine	Gampaha Wickramarachchi Ayurveda Institute	Swami Vipulananda Institute		University of Colombo School of Computing
Indigeneous Medicine	Female						38		47							184	78			347	
	Total						49		62							238	118			467	
Paramedical Studies <sup>(1)</sup>	Female	17	120	50	45		70	90	29												421
	Total	31	184	76	50		106	125	39												611
Engineering	Female		90			170	9	47		12											328
	Total		414			821	46	220		102											1603
Fashion Design/ Transport & Logistic Management	Female					37															37
	Total					92															92
Architecture/ Quantity Surveying <sup>(2)</sup>	Female					149															149
	Total					364															364
Computer Science/IT <sup>(3)</sup>	Female		29	28	31	172	57	14	4	79	38	22		49						86	609
	Total		49	48	99	298	124	50	25	109	75	99		118						274	1368
Total	Female	1527	1717	2069	1966	528	1489	1217	832	983	967	703	622	385	427	184	78	183	86	15963	
	Total	2270	2917	3215	2825	1575	2359	2027	1301	1456	1446	1190	1012	654	575	238	118	224	274	25676	

**Note:**

- (1) Includes Nursing, Pharmacy, Medical Laboratories Sciences, Radiography, Physiotherapy and Speech & Hearing Sciences.
- (2) Includes all other courses conducted in the Architecture Faculty such as Design, Town & Country Planning, Landscape Architecture and Facilities Management.
- (3) Includes the Management & Information Technology, Information Technology, Information & Communication Technology, Information Technology and Management, Computation & Management, Business Information Systems, Information Systems, Computer Science and Technology, etc.
- (4) Colombo, Jaffna and Eastern Universities include Sri Palee, Vavuniya and Trincomalee Campuses respectively.

Chart - 02

### UNDERGRADUATE ADMISSIONS BY ACADEMIC PROGRAMME

Academic Year 2012/13 - 2014/15

(Universities and HEIs established under the Universities Act.)

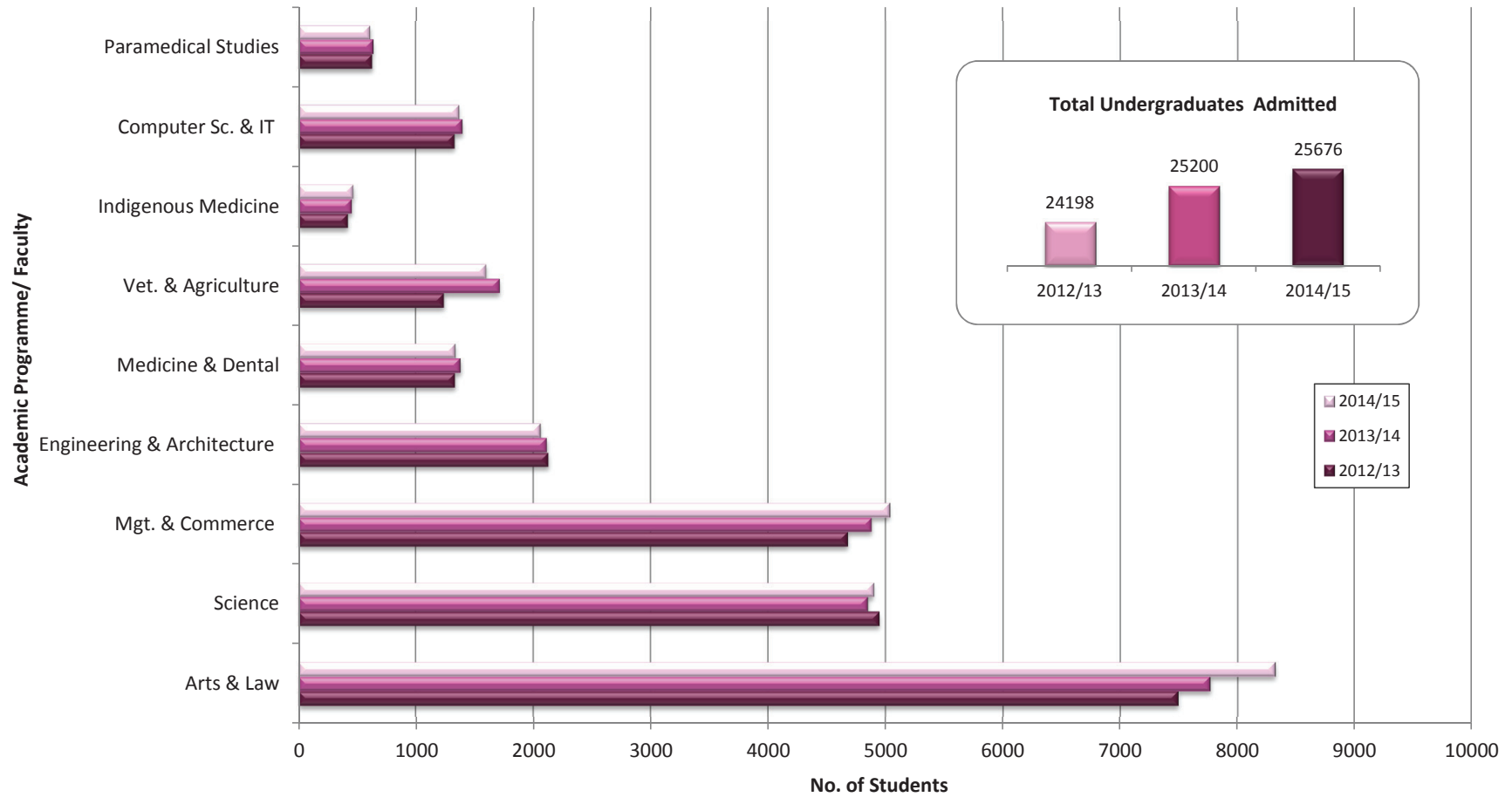


Chart - 03

### UNDERGRADUATE ADMISSIONS BY UNIVERSITY : Academic Year 2012/13 - 2014/15 (Universities and HEIs established under the Universities Act.)

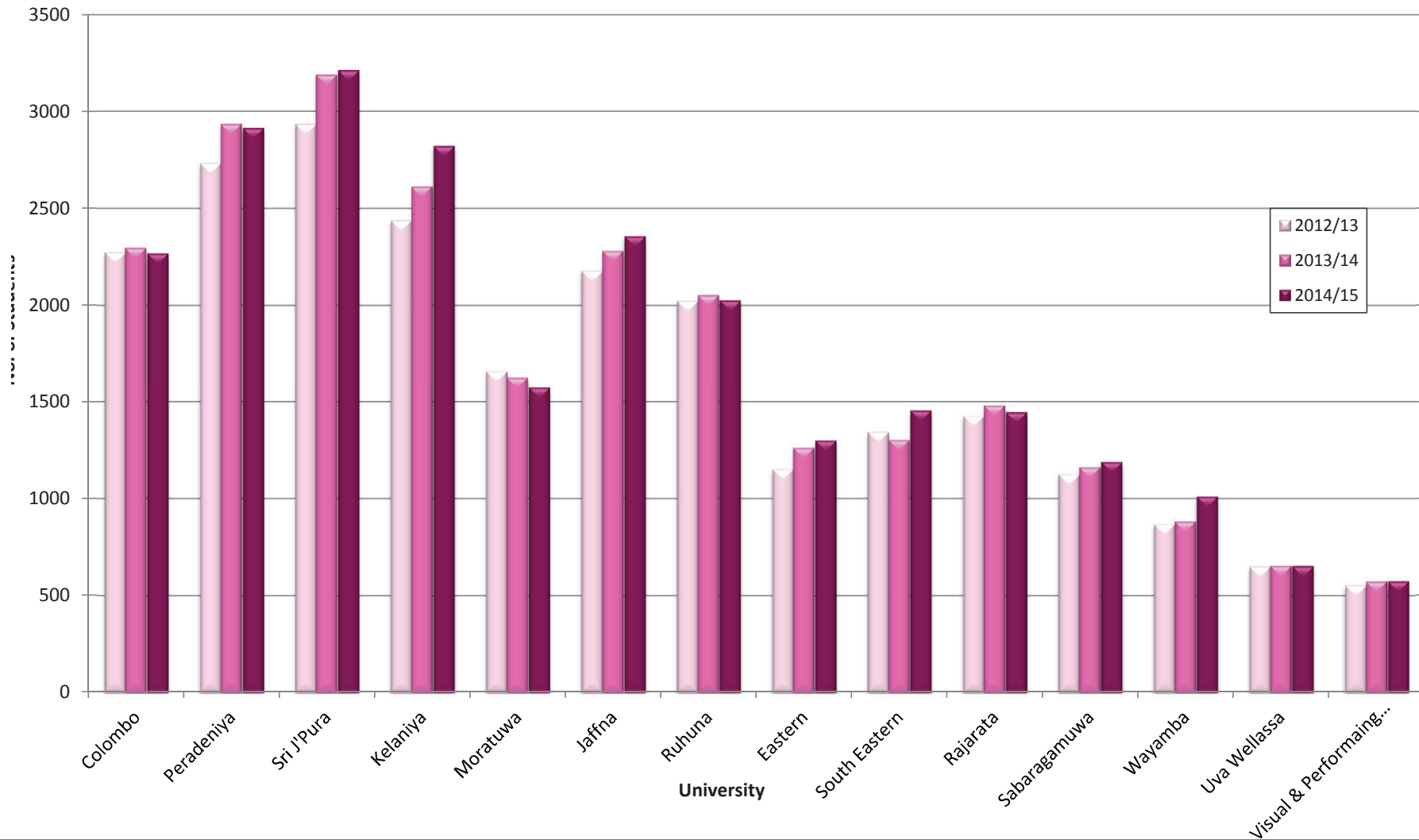


Table 02 - 03

**UNDERGRADUATE ADMISSIONS BY DISTRICT : Academic Year 2014/2015**  
(Universities and HEIs established under the Universities Act)

District  Academic Programme	District																									Total	
	Colombo	Gampaha	Kalutara	Matale	Kandy	Nuwara Eliya	Galle	Matara	Hambantota	Jaffna	Kilinochi	Mannar	Mullativu	Vauniya	Trincomalee	Batticaloa	Ampara	Puttalam	Kurunegla	Anuradhapura	Polonnaruwa	Badulla	Monaragala	Kegalle	Rathnapura		Special & Additional Intakes <sup>(1)</sup>
Agri Business	6	4	2	1	3	1	5	3	1	1	1	1	1	1	1	2	1	2	4	1	1	2	1	1	2		<b>49</b>
Agri Resources	17	11	10	3	7	4	14	7	10	4	1	1	1	1	2	3	4	4	12	4	2	4	2	8	13	1	<b>150</b>
Agricultural Technology & Management	25	19	10	3	22	5	14	7	9	8	1	1	1	1	3	4	4	5	20	7	3	5	3	9	9	1	<b>199</b>
Agriculture	72	52	45	11	48	17	35	21	22	32	3	2	2	4	11	15	19	15	47	21	9	17	9	36	39	3	<b>607</b>
Animal Science	5	5	2	1	6	1	5	4	1	2	1	1	1	1	1	1	1	1	6	2	1	3	1	2	3		<b>58</b>
Animal Science & Fisheries	3	3	2	1	2	1	1	6	1	1	1	1	1	1	1	2	1	3	3	1	1	1	1	9	1		<b>49</b>
Applied Sciences (Bio.)	34	25	13	4	20	5	15	7	5	6	1	1	1	1	4	4	4	5	17	6	3	6	3	10	8	1	<b>209</b>
Applied Sciences (Phy.)	67	29	20	6	24	10	48	39	15	12	2	1	1	2	5	9	19	13	19	13	6	13	6	16	17	2	<b>414</b>
Aquatic Resources Technology	5	4	2	1	6	1	6	3	1	2	1	1		1	1	1	1	1	5	2	1	2	1	5	4		<b>58</b>
Arabic Language	2	33	1	4	11		6	2							12	15	11	19	35	4	3			40			<b>198</b>
Architecture	8	4	2	1	6	1	4	1	4	4		1		1	1	1	1	2	4			2		2	3		<b>53</b>
Art & Design (Ramanathan)				1	1	1				9	1		1	1	2	3	6			1				1			<b>28</b>
Arts	277	364	322	73	256	75	511	350	248	146	29	25	31	23	37	71	112	118	393	304	55	211	161	280	355	1033	<b>5860</b>
Arts (SP) <sup>(2)</sup> / Mass Media	13	8	10	1	6	1	4	6	2									1	8	5	1	3	4	1	5	1	<b>80</b>
Arts (SP) <sup>(2)</sup> / Performing Arts	6	9	4	3	6	2	5	3	5									1	9	2	1	10	1	5	7	1	<b>80</b>
Arts (SAB) - A <sup>(2)</sup>	3	5	9	2	10	4	6	5	6	1					3		3	2	4	15	2	6	6	7	13	74	<b>186</b>
Arts (SAB) - B <sup>(2)</sup>	28	6	13		1		32	24																7	3	1	<b>115</b>
Ayurvedic Medicine & Surgery	43	22	13	6	15	7	20	17	19	6	1	1	1	2	4	16	8	7	20	10	5	16	6	9	22	2	<b>298</b>
Biological Science	263	131	90	22	122	33	99	58	41	31	5	7	5	8	19	24	30	41	115	42	19	46	21	53	72	19	<b>1416</b>
Business Information Systems (Special)	6	4	3	1	3	1	1	1	2	4	1	2	1	1	1	2	1	1	2	2	3	1	1	1	2		<b>48</b>
Commerce	108	52	42	11	30	16	82	27	18	12	2	2	2	5	8	11	14	18	39	20	9	20	10	25	47	16	<b>646</b>
Communication Studies	4	3	2	2	6	1	4	4		1						6	4	2	10	3	1	6	3	5	7	1	<b>75</b>



Table 02 - 03 (Contd.)

**UNDERGRADUATE ADMISSIONS BY DISTRICT : Academic Year 2014/2015**  
(Universities and HEIs established under the Universities Act)

District Academic Programme	District																								Total		
	Colombo	Gampaha	Kalutara	Matale	Kandy	Nuwara Eliya	Galle	Matara	Hambantota	Jaffna	Kilinochi	Mannar	Mullativu	Vauniya	Trincomalee	Batticaloa	Ampara	Puttalam	Kurunegla	Anuradhapura	Polonnaruwa	Badulla	Monragala	Kegalle		Rathnapura	Special & Additional Intakes <sup>(1)</sup>
Computation & Management	5	4	2	1	3	1	2	2	3	2	1	1	1	1	2	2	2	1	2	3	2	1	2	1	1	1	49
Computer Science	67	21	10	4	18	7	29	21	14	10	1	1	1	2	4	5	6	7	25	9	4	8	4	8	11	2	299
Computer Science & Technology	4	3	2	1	3	1	3	5	1	15	1	1	1	1	1	1	1	1	3	2	1	2	1	1	2	1	59
Computing & Information Systems	8	9	5	1	4	2	9	10	7	15	1			1	1	2	2	2	4	3	1	5	1	2	3	1	99
Dance (Ramanathan)	1			2	2	8				17	1	1	3	8	6	5	9					5				1	69
Dance (SVIAS) <sup>(2)</sup>	1			1		1				9	2	1	2	4	5	7	14					1				1	49
Dance (UVPA) <sup>(2)</sup>	21	23	17	7	12	5	10	11	10					1	3		4	8	18	9	4	15	7	9	12	9	215
Dental Surgery	33	4	2	1	3	2	2	3	2	2	1	1	1	1	1	1	2	2	3	2	1	2	1	2	3	2	80
Design	15	5	4	1	6		2	2	1	2				1					3	1		1	1	2	1		48
Drama & Theatre (SVIAS) <sup>(2)</sup>				2	6	2				8	1	1	1	1	3	10	9				1	1			2	1	49
Drama & Theatre (UVPA) <sup>(2)</sup>	2	2	2	2	5	1	2	1	4								1	1	2	3	1	1	1	2	2	1	36
Engineering	234	150	80	21	108	36	98	88	52	77	8	5	5	9	27	35	40	42	101	48	21	58	23	51	69	19	1505
Engineering (EM) <sup>(2)</sup>	9	3	1	1	2	1	7	5	1	2	1	1	1	1	1	1	1	1	2	1	1	1	1	1	1	1	49
Engineering (TM) <sup>(2)</sup>	16	3	1	1	2	1	1	4	1	2	1	1	1	1	1	1	1	1	2	1	1	1	1	1	1	1	49
Entrepreneurship & Management	14	6	3	1	5	1	3	5	1	1	1	1		1	1	1	1	2	3	2	1	2	1	3	3	1	64
Environmental Conservation & Management	6	6	1	2	2	1	1	1	1	3	1	1	1	1	1	1	1	2	3	1	1	2	1	1	6		48
Estate Mgt. & Valuation	5	3	3	1	3	2	7	2	1	3	1	1	1	1	3	1	3	1	3	4	2	3	2	1	2	1	60
Export Agriculture	3	6	6	1	5	1	5	3	1	1	1	1	1	1	1	1	1	1	7	2	1	2	1	2	3		58
Facilities Management	9	4	1	1	2	1	3	1	1	1	1	1	1	1	1	1	2	1	4	2	2	2	1	2	2	1	49
Fashion Design & Product Development	8	4	3	1	4	1	4	1		2							1		4	1	1			1	2		38
Film & Television Studies	5	6	3	1	4	1	3	4	2						1		1	1	3	2	1	1	2	2	5	1	49
Fisheries & Marine Sciences	8	5	4	1	3	1	3	3	2	2	1	1	1	1	2	1	1	2	3	3	1	3	1	1	4	1	59

Table 02 - 03 (Contd.)

**UNDERGRADUATE ADMISSIONS BY DISTRICT : Academic Year 2014/2015**  
(Universities and HEIs established under the Universities Act)

District  Academic Programme	Colombo	Gampaha	Kalutara	Matale	Kandy	Nuwara Eliya	Galle	Matara	Hambantota	Jaffna	Kilinochi	Mannar	Mullativu	Vauniya	Trincomalee	Batticaloa	Ampara	Puttalam	Kurunegla	Anuradhapura	Polonnaruwa	Badulla	Monaragala	Kegalle	Rathnapura	Special & Additional Intakes <sup>(1)</sup>	Total
	Food & Nutrition	16	8	4	3	4	3	9	8	5	7	1	1	1	2	1	2	2	3	8	3	1	3	2	6	5	1
Food Production & Technology Management	5	4	2	3	2	1	4	3	1	6	1	1	1	1	1	1	2	1	2	2	1	2	1	4	6	2	60
Food Science & Technology	34	14	9	2	10	4	17	4	10	5	1	1	1	1	2	3	3	4	11	4	2	4	2	4	6	1	159
Green Technology	7	4	1	1	2	1	3	1	2	6	1	1	1	1	1	1	1	2	4	1	1	1	1	1	2	1	49
Health Promotion	3	4	2	1	2	1	1	1	6	3	1	1	1	1	2	4	2	1	3	2	1	1	1	1	2		48
Hospitality Tourism & Events Management	8	5	4	1	4	1	7	3	2	2	1	1	1	1	1	1	1	1	3	2	1	2	1	3	6	1	64
Industrial Information Technology	6	4	2	2	7	1	3	3	1	1	1	1	1	1	2	1	1	5	2	1	3	1	1	6	1	59	
Industrial Statistics & Mathematical Finance	17	8	4	1	8	2	8	4	3	4	1	1	1	1	2	2	2	6	2	1	2	1	3	3	1	89	
Information & Communication Tech	22	18	7	2	11	4	10	3	3	11		1		2	3	5	3	4	14	5	2	5		6	7	2	150
Information Systems	20	11	4	1	6		11	8	2	4		1		1	1	2	2	1	5	4	1	5	1	2	5	1	99
Information Technology	34	13	6	3	10	5	30	20	10	5	1	1	1	2	3	3	4	5	12	7	3	5	3	4	8	1	199
Information Technology & Management	16	8	6	2	5	2	7	7	3	2	1	1	1	1	2	3	3	6	3	1	4	1	2	10	1	99	
Islamic Studies	1	14	13	7	10	1	2	6	1					2	30	19	41	23	35	12	7	3	2	18	1	1	249
Landscape Architecture	11	3	1	1	5		5		2	2						2			2			2		2	2	1	41
Law	47	41	23	6	16	8	31	12	14	8	1	1	1	3	4	6	8	15	24	14	7	17	6	10	23	4	350
Management	673	423	237	62	237	105	237	161	104	90	15	14	11	30	57	73	89	140	242	142	67	136	73	128	214	19	3779
Management & Information Tech.	8	4	3	1	2	1	5	3	1	4		1		1	1		1	1	4	1		1	1	2	2	1	49
Management & Information Technology (SEUL) <sup>(2)</sup>	9	8	3	1	5	3	5	5	2	3	1	1	1	1	4	12	14	4	6	3	1	4	2	4	6	1	109
Management Studies (TV) - A <sup>(2)</sup>	10	6	4	2	5	3	4	4	3	5	1	1	1	2	2	2	3	3	6	4	2	4	2	3	4	1	87
Management Studies (TV) - B <sup>(2)</sup>	9	7	4	2	5	3	4	3	3	5	1	1	1	1	2	3	3	3	6	4	2	4	2	4	4	1	87
Medical Laboratory Sciences	14	11	4	1	12	3	8	10	3	6	1	1	1	1	2	2	3	3	13	3	1	3	2	3	4	1	114
Medicine	225	110	67	18	88	32	87	58	38	50	6	5	4	11	20	34	30	37	83	41	18	40	18	39	64	32	1255

Table 02 - 03 (Contd.)

**UNDERGRADUATE ADMISSIONS BY DISTRICT : Academic Year 2014/2015**  
(Universities and HEIs established under the Universities Act)

District Academic Programme	District																								Special & Additional Intakes <sup>(1)</sup>	Total	
	Colombo	Gampaha	Kalutara	Matale	Kandy	Nuwara Eliya	Galle	Matara	Hambantota	Jafna	Kilinochi	Mannar	Mullativu	Vauniya	Trincomalee	Batticaloa	Ampara	Puttalam	Kurunegla	Anuradhapura	Polonnaruwa	Badulla	Monaragala	Kegalle			Rathnapura
Mineral Resources & Technology	4	4	2	2	6	1	4	3	1	8		1		1	1	1	1	4	3	1	3		4	2		<b>58</b>	
Molecular Biology and Biochemistry	14	3	2	1	6	1	4	3	1	5	1	1	1	1	1	1	1	2	2	1	2	1	1	2	1	<b>60</b>	
Music (Ramanathan)	1			1	1	2				39	1	2	5	4	3	11	1					1				<b>72</b>	
Music (SVIAS) <sup>(2)</sup>	1			4	1	3				17	3	3	4	2	5	13	12					9			1	<b>78</b>	
Music (UVPA) <sup>(2)</sup>	18	29	16	3	27	1	8	4	3							1	9	33	15	5	9	7	12	21	3	<b>224</b>	
Nursing	23	26	9	3	10	6	14	10	10	16	1	1	1	1	5	9	16	6	13	9	5	6	3	11	9	1	<b>224</b>
Palm And Latex Technology & Value Addition	7	7	4	1	3	1	6	1	1	2		1		1	1	1	1	6	2	1	2	1	3	4	1	<b>59</b>	
Peace & Conflict Resolution	4	2	3	1	4		1	1	1	1					2	1			6	3		1		1	1	<b>33</b>	
Pharmacy	18	10	5	3	4	3	8	13	4	4	1	1	1	2	1	3	4	3	10	3	2	3	2	4	6	1	<b>119</b>
Physical Education	3	2	3	2	1	2	2			1				2	4		3	2	4			2		1	4	<b>38</b>	
Physical Science	304	218	121	37	145	47	124	104	72	66	7	10	7	11	24	34	44	55	151	55	26	77	29	74	99	13	<b>1954</b>
Physiotherapy	11	3	2	1	3	1	6	6	1	4	1	1	1	1	1	1	1	3	2	1	3	1	1	2	2	<b>61</b>	
Project Management	5	3	1	2	2	1	2	3	2	2	3	1	1	1	1	3	3	1	3	2	1	1	1	2	2	1	<b>50</b>
Public Management (Special)	7	6	3	1	9	3	2	4	1	2	1	2	1	3	1	2	2	4	4	3	1	2	4	2	3		<b>73</b>
Quantity Surveying	20	8	4	2	4	3	12	15	3	16	1	1	1	1	2	2	3	3	5	3	2	3	2	3	4	1	<b>124</b>
Radiography	5	4	1	2	1	1	1	2	2	4	1	1	1	1	1	2	2	2	2	1	1	1	1	1	2		<b>43</b>
Science & Technology	6	6	2	1	2	1	3	4	1	13	1	1		1	1	1	1	2	2	1	2	1	1	3		<b>58</b>	
Siddha Medicine	10	10	4	1	5	2		2		13	1	1	1	6	3	10	2	2	11	4	1	4	1	4		13	<b>111</b>
Software Engineering	6	3	1	1	6	1	2	2	2	6	1	1	1	1	1	1	1	4	1	1	1	1	1	1	2	<b>50</b>	
Speech & Language Therapy	5	9	3	1	2	1	1	1	2	1	1	1	1	1	1	1	1	6	1	2	1	1	1	2	2	<b>50</b>	
Sports Sciences & Management	15	9	8	2	7		6	1	1	6				1	2	1		5	12	2		1		6	3	1	<b>89</b>
Statistics & Operations Research	6	3	1	1	5	1	3	4	2	4	1	1	1	1	1	1	1	3	1	1	1	1	1	2	1	<b>49</b>	

Table 02 - 03 (Contd.)

**UNDERGRADUATE ADMISSIONS BY DISTRICT : Academic Year 2014/2015**  
(Universities and HEIs established under the Universities Act)

District Academic Programme	District																										
	Colombo	Gampaha	Kalutara	Matale	Kandy	Nuwara Eliya	Galle	Matara	Hambantota	Jaffna	Kilinochi	Mannar	Mullativu	Vauniya	Trincomalee	Batticaloa	Ampara	Puttalam	Kurunegla	Anuradhapura	Polonnaruwa	Badulla	Monaragala	Kegalle	Rathnapura	Special & Additional Intakes <sup>(1)</sup>	Total
Surveying Science	6	6	4	1	5	2	6	3	4	14	1	1	1	1	1	1	2	2	4	2	1	2	1	2	5	1	79
Tea Technology & Value Addition	8	5	3	1	3	1	7	4	1	1	1			1	1	1	1	1	6	2	1	2	1	4	2	1	59
Tourism & Hospitality Management	15	11	8	2	6	5	9	5	5	2	1	1	1	1	1	2	3	3	7	6	4	3	2	5	10	2	120
Town & Country Planning	7	4	2	1	2	1	7	2	1	1	1	1	1	1	1	1	1	2	3	2	1	1	1	1	2	1	49
Translation Studies (KLN <sup>(1A)</sup> & SAB <sup>(2)</sup> )	8	5	5	1	7	1	4	1	2									1	3	2	1	2	1	1	3	1	49
Translation Studies (UJA) <sup>(2)</sup>	1		1	1	1	1				2	1	1	1	1	1	3	1	1	1	1	1	1		1	1	1	24
Transport & Logistics Management	20	3	2	1	2	1	2	3	1	1	1	1	1	1	1	1	1	1	2	1	1	1	1	1	2	1	54
Unani Medicine & Surgery	4	3	3	1	2	1	2	1	1	1	1	1	1	1	2	5	13	2	4	2	1	2	1	1	2		58
Veterinary Science	17	6	3	1	14	2	6	9	2	5	1	1	1	1	1	2	2	2	9	3	1	3	1	2	3	1	99
Visual & Technological Arts (SVIAS) <sup>(2)</sup>										8			2	1	4	10	10	5	6						2		48
Visual Arts (UVPA) <sup>(2)</sup>	9	10	8	2	14	3	4	5	6					1				2	8	6	1	4	1	6	6	4	100
<b>Total</b>	<b>3252</b>	<b>2206</b>	<b>1411</b>	<b>421</b>	<b>1579</b>	<b>548</b>	<b>1865</b>	<b>1310</b>	<b>867</b>	<b>950</b>	<b>146</b>	<b>143</b>	<b>139</b>	<b>211</b>	<b>396</b>	<b>572</b>	<b>699</b>	<b>716</b>	<b>1804</b>	<b>966</b>	<b>361</b>	<b>898</b>	<b>482</b>	<b>1033</b>	<b>1368</b>	<b>1333</b>	<b>25676</b>

**Note :**

- (1) "Special & Additional Intakes" refers to the students admitted on the basis of Special Categories such as blind and differently abled, excelled in fields other than studies, armed forces, foreign, teachers ... etc., on the recommendation of the Appeals Committee and the Additional Intake, for special subjects such as Japanies, English, History... etc.
- (2) Abbreviation : UJA - University of Jaffna, SP - Sripalee Campus, SAB - Sabaragamuwa University, SEUSL - South Eastern University, UVPA - University of Visual and Performing Arts, TV-Trincomalee & Vavuniya Campuses, SVIAS - Swamy Vipulananda Institute of Aesthetic Studies, EM - Earth Resources Engineering, TM - Textile & Clothing Technology, KLN - University of Kelaniya  
SAB (A) - from Arts Stream to Sabaragamuwa University, SAB (B) - from Commerce Stream to Sabaragamuwa University  
TV (A) - from Commerce Stream to Trincomalee & Vaunia Campuses, TV (B) - from All Streams to Trincomalee & Vaunia Campuses

Chart - 04

### ADMISSIONS BY DISTRICT AND ADMITTED CATEGORY : Academic Year 2014/2015 (Universities and HEIs established under the Universities Act.)

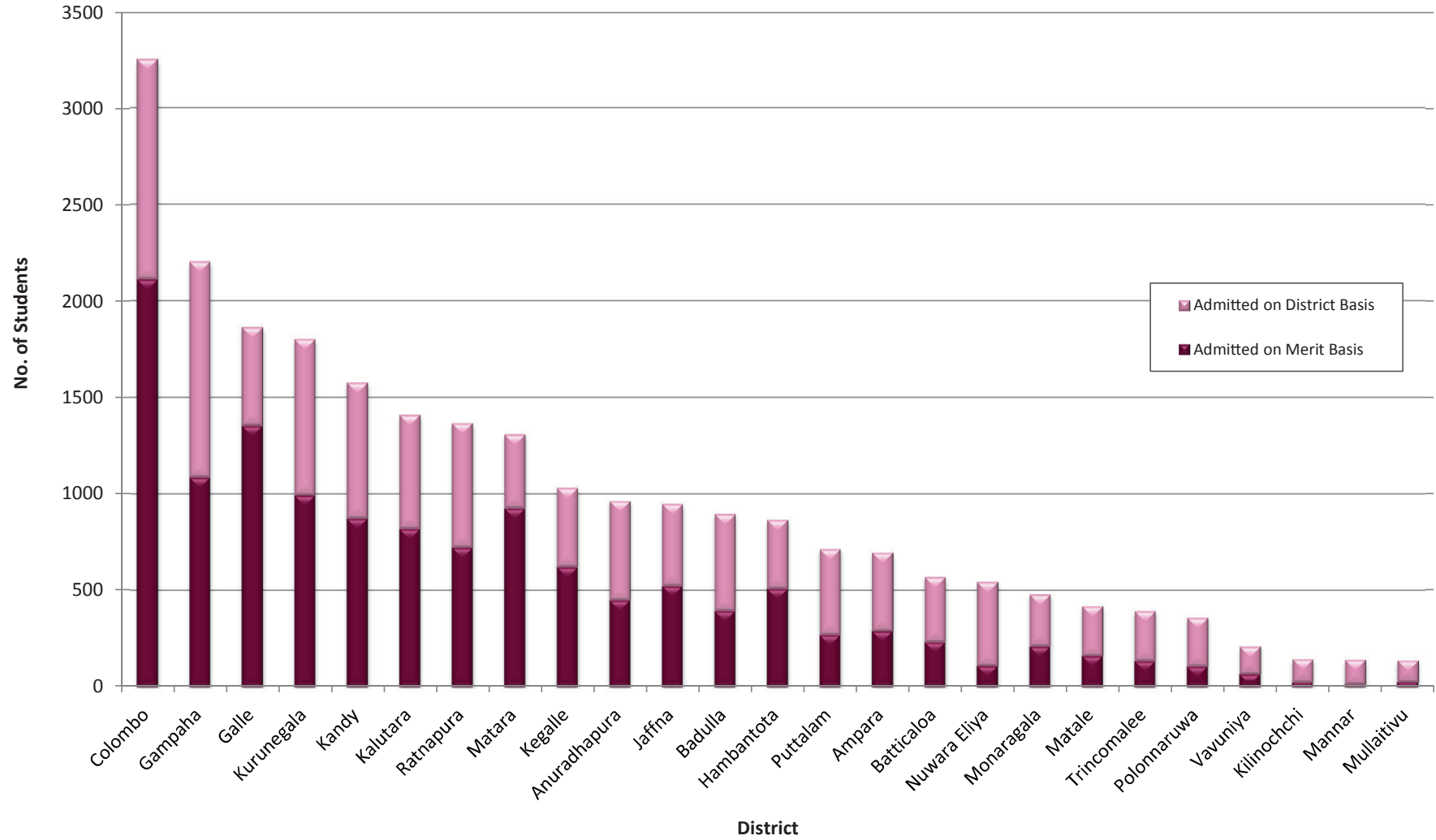


Table 02 - 04

**UNDERGRADUATE ADMISSIONS BY ACADEMIC PROGRAMME AND ADMISSION POLICY : Academic Year 2014/2015**  
(Universities and HEIs established under the Universities Act)

Faculty/ Academic Programme	District																									Special & Additional Intakes <sup>(1)</sup>	Total		
	Admitted Category <sup>(2)</sup>	Colombo	Gampaha	Kalutara	Matale	Kandy	Nuwara Eliya	Galle	Matara	Hambantota	Jaffna	Kilinochi	Mannar	Mullativu	Vauniya	Trincomalee	Batticaloa	Ampara	Puttalam	Kurunegla	Anuradhapura	Polonnaruwa	Badulla	Monaragala	Kegalle			Rathnapura	
Arts <sup>(3)</sup>	Merit	363	471	400	103	344	78	584	415	278	206	19	12	26	37	91	138	196	173	527	361	72	258	185	375	413		<b>6125</b>	
	Other	43	48	29	18	47	36	18	12	12	52	20	22	24	11	27	36	44	21	47	26	13	32	11	23	34	1135	<b>1841</b>	
Law	Merit	25	20	12	1	3		21	4	7	1				1			1	6	9	4	2	8	1	2	11		<b>139</b>	
	Other	22	21	11	5	13	8	10	8	7	7	1	1	1	2	4	6	7	9	15	10	5	9	5	8	12	4	<b>211</b>	
Management	Merit	477	201	130	14	116	22	155	98	34	22	2	2		12	12	14	16	48	87	46	20	40	21	57	92		<b>1738</b>	
	Other	269	269	137	60	160	102	120	92	88	90	23	21	18	29	57	74	92	110	190	123	61	117	67	94	156	27	<b>2646</b>	
Commerce	Merit	69	13	21	3	7	1	63	13	5					1				2	12	2	1	3	1	11	24		<b>252</b>	
	Other	39	39	21	8	23	15	19	14	13	12	2	2	2	4	8	11	14	16	27	18	8	17	9	14	23	16	<b>394</b>	
Medicine	Merit	149	35	27	2	43	3	52	31	14	20	1			4	5	13	4	6	30	6	2	7		12	20		<b>486</b>	
	Other	76	75	40	16	45	29	35	27	24	30	5	5	4	7	15	21	26	31	53	35	16	33	18	27	44	32	<b>769</b>	
Dental Surgery	Merit	28																											<b>28</b>
	Other	5	4	2	1	3	2	2	3	2	2	1	1	1	1	1	1	2	2	3	2	1	2	1	2	3	2	<b>52</b>	
Veterinary Medicine	Merit	11				10		3	7		2									5									<b>38</b>
	Other	6	6	3	1	4	2	3	2	2	3	1	1	1	1	1	2	2	2	4	3	1	3	1	2	3	1	<b>61</b>	
Agriculture	Merit	79	40	44	6	57	3	70	32	28	36	1			1	3	8	8	3	62	5	1	2		53	38		<b>580</b>	
	Other	93	88	44	22	54	35	41	29	28	31	12	12	10	14	23	27	31	36	58	44	23	42	24	32	53	11	<b>917</b>	
Science	Merit	497	183	130	24	189	1	207	146	69	81				1	6	6	15	21	152	7		39		76	72		<b>1922</b>	
	Other	300	294	161	65	181	111	140	103	96	108	25	30	23	36	65	82	100	118	217	134	65	130	70	108	168	42	<b>2972</b>	
Indigenous Med	Merit	29	7	4	2	4		12	10	13	11				5	3	23	14	1	15	2	1	8	2	3	11		<b>180</b>	
	Other	28	28	16	6	18	10	10	10	7	9	3	3	3	4	6	8	9	10	20	14	6	14	6	11	13	15	<b>287</b>	
Paramedical Studies <sup>(4)</sup>	Merit	40	27	5	2	11	1	22	29	11	24				1	2	7	13	1	21	3	3			7	5		<b>235</b>	
	Other	36	36	19	9	21	14	16	13	11	11	6	6	6	6	8	11	13	15	26	16	9	17	10	14	20	7	<b>376</b>	

Table 02 - 04 (Contd.)

**UNDERGRADUATE ADMISSIONS BY ACADEMIC PROGRAMME AND ADMISSION POLICY : Academic Year 2014/2015**  
(Universities and HEIs established under the Universities Act)

Faculty/ Academic Programme	District																									Special & Additional Intakes <sup>(1)</sup>	Total	
	Admitted Category <sup>(2)</sup>	Colombo	Gampaha	Kalutara	Matale	Kandy	Nuwara Eliya	Galle	Matara	Hambantota	Jaffna	Kilinochi	Mannar	Mullativu	Vauniya	Trincomalee	Batticaloa	Ampara	Puttalam	Kurunegla	Anuradhapura	Polonnaruwa	Badulla	Monaragala	Kegalle			Rathnapura
Engineering	Merit	160	58	31	2	53	1	61	62	22	47	2			1	8	9	8	5	36	6	1	18	1	17	16		<b>625</b>
	Other	99	98	51	21	59	37	45	35	32	34	8	7	7	10	21	28	34	39	69	44	22	42	24	36	55	21	<b>978</b>
Fashion Design/Transport & Logistic	Merit	22	1	1		2		3	2		1						1		1							1		<b>35</b>
	Other	6	6	4	2	4	2	3	2	1	2	1	1	1	1	1	1	1	1	5	2	2	1	1	2	3	1	<b>57</b>
Architecture/ Quantity Surveying <sup>(5)</sup>	Merit	40	6	4	1	5		24	14	6	19				1		1	1	2	5	2	1	3		4	3		<b>142</b>
	Other	30	22	10	6	20	6	9	7	6	7	3	4	3	4	5	6	6	6	16	6	4	8	5	8	11	4	<b>222</b>
Computer Science/IT <sup>(6)</sup>	Merit	125	25	11	2	30		78	64	24	54		1		2	5	15	14	3	33	7	3	9	1	6	17		<b>529</b>
	Other	86	85	43	19	53	29	39	26	27	28	10	12	9	14	19	24	27	29	59	38	18	36	18	29	47	15	<b>839</b>
Total	Merit	<b>2114</b>	<b>1087</b>	<b>820</b>	<b>162</b>	<b>874</b>	<b>110</b>	<b>1355</b>	<b>927</b>	<b>511</b>	<b>524</b>	<b>25</b>	<b>15</b>	<b>26</b>	<b>67</b>	<b>135</b>	<b>234</b>	<b>291</b>	<b>271</b>	<b>995</b>	<b>451</b>	<b>107</b>	<b>395</b>	<b>212</b>	<b>623</b>	<b>723</b>		<b>13054</b>
	Other	<b>1138</b>	<b>1119</b>	<b>591</b>	<b>259</b>	<b>705</b>	<b>438</b>	<b>510</b>	<b>383</b>	<b>356</b>	<b>426</b>	<b>121</b>	<b>128</b>	<b>113</b>	<b>144</b>	<b>261</b>	<b>338</b>	<b>408</b>	<b>445</b>	<b>809</b>	<b>515</b>	<b>254</b>	<b>503</b>	<b>270</b>	<b>410</b>	<b>645</b>	<b>1333</b>	<b>12622</b>
Grand Total		<b>3252</b>	<b>2206</b>	<b>1411</b>	<b>421</b>	<b>1579</b>	<b>548</b>	<b>1865</b>	<b>1310</b>	<b>867</b>	<b>950</b>	<b>146</b>	<b>143</b>	<b>139</b>	<b>211</b>	<b>396</b>	<b>572</b>	<b>699</b>	<b>716</b>	<b>1804</b>	<b>966</b>	<b>361</b>	<b>898</b>	<b>482</b>	<b>1033</b>	<b>1368</b>	<b>1333</b>	<b>25676</b>

**Note:**

- (1) Special & Additional Intakes refers to the students admitted on the basis of Special Categories such as blind and differently abled, excelled in fields other than studies, armed forces, foreign, teachers ..... etc. , on the recommendation of the Appeals Committee and Additional Intakes for special subjects in Arts such as Japanies, English, History etc.
- (2) "Other" refers to students admitted under District quota and Underprivileged District quota.
- (3) Admission to Arts Degree programme is purely on merit however, policy ensures the number selected from each district to be not less than the number admitted in 1993/94 or 2002/2003, which ever is greater. This adjustment is shown under the Other category
- (4) Includes Nursing, Pharmacy, Medical Laboratories Sciences, Radiography, Physiotherapy and Speech & Hearing Sciences.
- (5) Includes all other courses conducted in the Architecture Faculty such as Design, Town & Country Planning, Landscape Architecture and Facilities Management.
- (6) Includes the Management & Information Technology, Information Technology, Information & Communication Technology, Information Technology and Management, Computation & Management, Business Information Systems, Information Systems, Computer Science and Technology, etc.

Chart - 05

## ETHNIC COMPOSITION OF ADMISSIONS BY ACADEMIC PROGRAMME

**Academic Year 2014/2015**

(Universities and HEIs established under the Universities Act.)

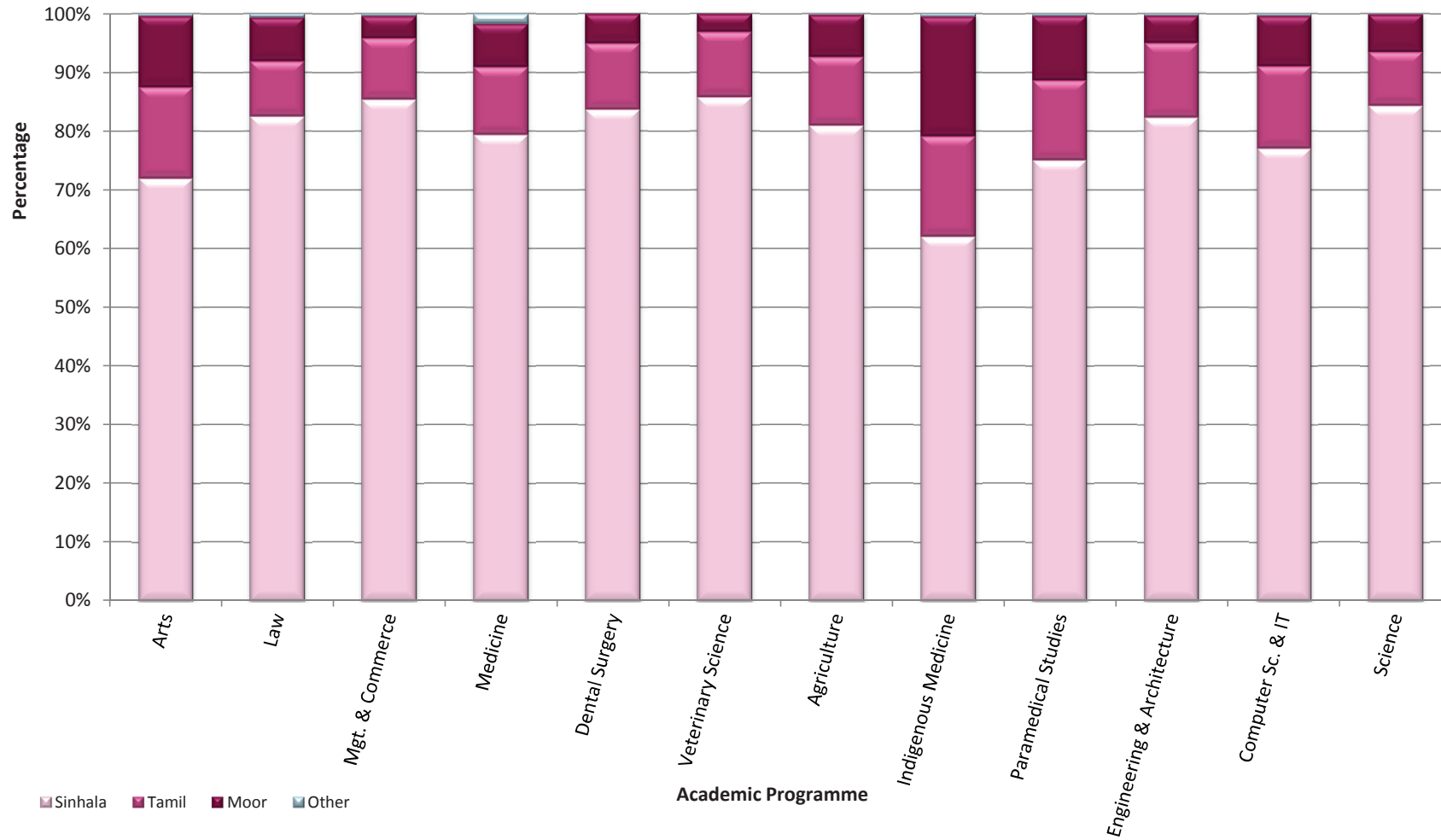




Table 02 - 05

**UNDERGRADUATE ADMISSIONS BY ACADEMIC PROGRAMME, HIGHER EDUCATIONAL INSTITUTION AND ETHNICITY : Academic  
Year 2014/2015  
(Universities and HEIs established under the Universities Act)**

University/HEI	Faculty/Academic Programme	Ethnicity	Arts	Law	Management	Commerce	Medicine	Dental Surgery	Veterinary Medicine	Agriculture	Science	Indigenous Med	Paramedical Studies <sup>(1)</sup>	Engineering	Fashion Design/Transport & Logistic Management	Architecture/ Quantity Surveying <sup>(2)</sup>	Computer Science/IT <sup>(3)</sup>	Total
Colombo	Sinhala		809	228	368		155				476		26					2062
	Tamil		8	9	32		25				30		4					108
	Moor		38	11	19		9				10		1					88
	Other		3	2	1		6											12
Peradeniya	Sinhala		737	43	137		181	67	85	255	445		126	361			33	2470
	Tamil		78	2	7		15	9	11	35	17		30	39			7	250
	Moor		88	4	5		9	4	3	8	21		28	14			9	193
	Other		3		1													4
Sri Jayewardenepura	Sinhala		879		964	121	128				840		62				32	3026
	Tamil		3		62	2	8				18		8				14	115
	Moor		7		14	3	11				21		6				1	63
	Other		5		5												1	11
Kelaniya	Sinhala		1463		331	192	146				449		40				77	2698
	Tamil		10		10	6	2				10		6				17	61
	Moor		8		9	3	8				20		3				5	56
	Other		6			1	2						1					10
Moratuwa	Sinhala													690	78	287	254	1309
	Tamil													103	10	58	27	198
	Moor													24	4	17	17	62
	Other													4		2		6
Jaffna	Sinhala		2	18	186	73	27			50	256	6	61	18			83	780
	Tamil		623	22	241	26	82			38	199	25	29	27			26	1338
	Moor		43	11	20	2	27			14	66	18	15	1			14	231
	Other		2			2	3				1		1				1	10

Table 02 - 05 (Contd.)

**UNDERGRADUATE ADMISSIONS BY ACADEMIC PROGRAMME, HIGHER EDUCATIONAL INSTITUTION AND ETHNICITY : Academic  
Year 2014/2015  
(Universities and HEIs established under the Universities Act)**

University/HEI	Faculty/Academic Programme	Ethnicity	Arts	Law	Management	Commerce	Medicine	Dental Surgery	Veterinary Medicine	Agriculture	Science	Indigenous Med	Paramedical Studies <sup>(1)</sup>	Engineering	Fashion Design/Transport & Logistic Management	Architecture/ Quantity Surveying <sup>(2)</sup>	Computer Science/IT <sup>(3)</sup>	Total
			Ruhuna	Sinhala	502		311		156				207	377		114	188	
Tamil	1			1						28	8			16				<b>54</b>
Moor	1			6		2				12	14		11	16			1	<b>63</b>
Other				1		3				1	1							<b>6</b>
Eastern	Sinhala	60		100	88	36				59	250	20	30				12	<b>655</b>
	Tamil	256		59	16	12				19	42	15	6				10	<b>435</b>
	Moor	77		10	1	13				35	38	27	3				3	<b>207</b>
	Other					4												<b>4</b>
South Eastern	Sinhala	2		68	99						221			74			50	<b>514</b>
	Tamil	45		8	3						24			9			17	<b>106</b>
	Moor	663		54	7						47			19			42	<b>832</b>
	Other	3			1													<b>4</b>
Rajarata	Sinhala	407		350		168				151	205						65	<b>1346</b>
	Tamil	2		14		1				1	13						7	<b>38</b>
	Moor	3		6		13				5	25						3	<b>55</b>
	Other	4				3												<b>7</b>
Sabaragamuwa	Sinhala	301		351						112	222						74	<b>1060</b>
	Tamil	10		4						14	30						21	<b>79</b>
	Moor	15		6						9	17						4	<b>51</b>
Wayamba	Sinhala			453						179	265							<b>897</b>
	Tamil			21						16	22							<b>59</b>
	Moor			17						14	19							<b>50</b>
	Other			4						1	1							<b>6</b>
Uva Wellassa	Sinhala			106						200	124						81	<b>511</b>
	Tamil			14						24	36						28	<b>102</b>
	Moor			8						10	14						8	<b>40</b>
	Other																1	<b>1</b>

Table 02 - 05 (Contd.)

**UNDERGRADUATE ADMISSIONS BY ACADEMIC PROGRAMME, HIGHER EDUCATIONAL INSTITUTION AND ETHNICITY : Academic  
Year 2014/2015  
(Universities and HEIs established under the Universities Act)**

University/HEI	Faculty/Academic Programme	Ethnicity	Arts	Law	Management	Commerce	Medicine	Dental Surgery	Veterinary Medicine	Agriculture	Science	Indigenous Med	Paramedical Studies <sup>(1)</sup>	Engineering	Fashion Design/Transport & Logistic Management	Architecture/ Quantity Surveying <sup>(2)</sup>	Computer Science/IT <sup>(3)</sup>	Total
			Visual and Performing Arts	Sinhala	572													
Moor	2																	2
Other	1																	1
Institute of Indigenous Medicine	Sinhala											172						172
	Tamil											24						24
	Moor											40						40
	Other											2						2
Gampaha Wickramarachi Ayurveda Instititue	Sinhala											92						92
	Tamil											16						16
	Moor											10						10
Swami Vipulananda Institute	Sinhala	2																2
	Tamil	202																202
	Moor	20																20
University of Colombo School of Computing	Sinhala																245	245
	Tamil																18	18
	Moor																10	10
	Other																1	1
Total	Sinhala	5736	289	3725	573	997	67	85	1213	4130	290	459	1331	78	287	1055	20315	
	Tamil	1238	33	473	53	145	9	11	175	449	80	83	194	10	58	192	3203	
	Moor	965	26	174	16	92	4	3	107	312	95	67	74	4	17	117	2073	
	Other	27	2	12	4	21			2	3	2	2	4		2	4	85	
Grand Total		7966	350	4384	646	1255	80	99	1497	4894	467	611	1603	92	364	1368	25676	

**Note**

- (1) Includes Nursing, Pharmacy, Medical Laboratories Sciences, Radiography, Physiotherapy and Speech & Hearing Sciences.  
(2) Includes all other courses conducted in the Architecture Faculty such as Design, Town & Country Planning, Landscape Architecture and Facilities Management.  
(3) Includes the Management & Information Technology, Information Technology, Information & Communication Technology, Information Technology and Management, Computation & Management, Business Information Systems, Information Systems, Computer Science and Technology, etc.